

## Throttle valve NW 10 to 100

for water and oil  
max. 320 bar  
for block mounting

Throttle valves in the series DEC 10-100 consist of a throttle with throttle pinion. They were specially developed for water hydraulics. The throttle valves can continuously regulate fluid flow from B to A or even from A to B.

The flow rate depends on differential pressure and viscosity. The design of this throttle also permits a blocking in both flow directions.

The throttle is sealed by pressing two metal cones against one another.

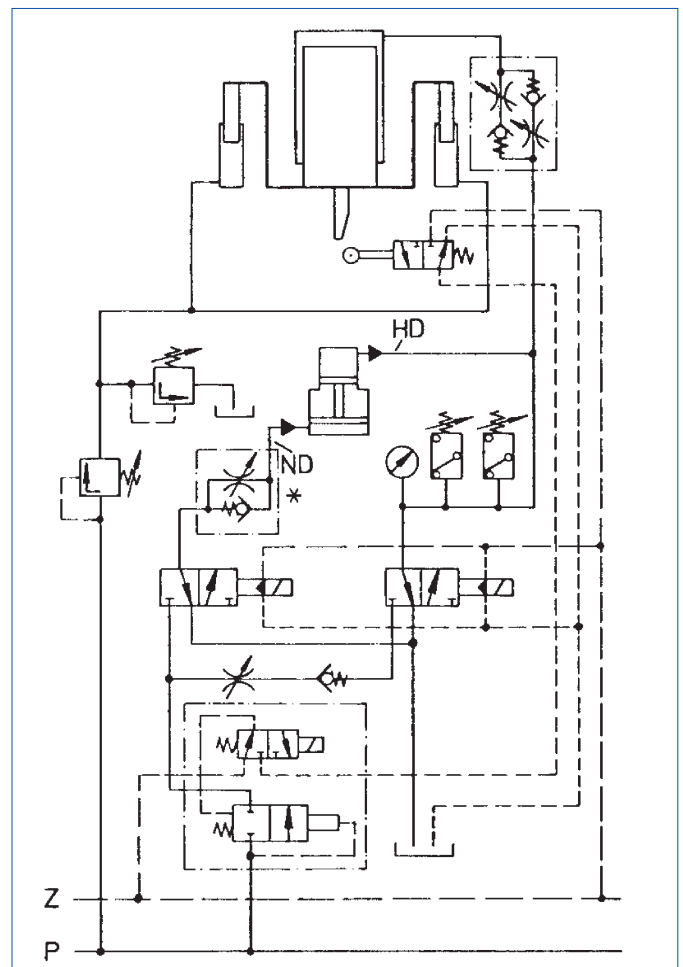
The max. working pressure should not exceed 320 bar.

### Special features:

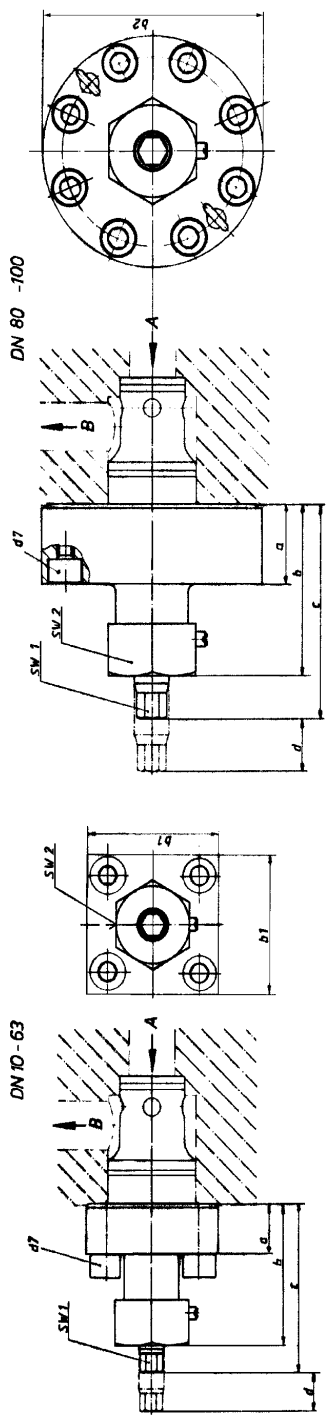
The adjustable throttle can be adjusted under pressure, and is secured against auto-turning by means of a locknut.

Throttle and throttle seat are easy to replace. Throttle valves of this type are almost insensitive with regard to the high flow speeds occurring in hydraulic press water systems. All wear parts are made of corrosion resistant materials, are easy to access and fast to replace. The mounting position can be freely chosen.

Mounting example:

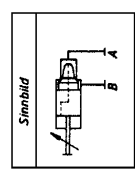
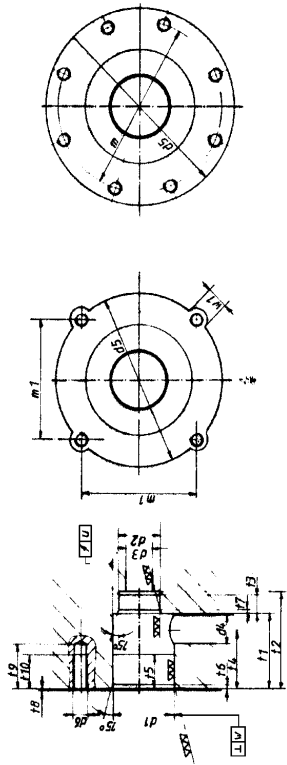


\* Throttle check valve



DN 80 -100

DN 10-63



DN	10	16	25	32	40	50	63	80	100
a	70	12	35	40	50	55			
b	38	47	86	106	116	130			
c	50	60	97	118	128	150			
d	15	20	23	28	33	40			
d1	6	8	8	11	13	14			
SW1	27	32	38	50	55	60			
SW2	27	32	38	50	55	60			
b1	45	65	85	102	125	140	160		
b2	25	32	45	60	75	90	120	145	180
d1 M7	18	25	34	45	55	68	90	110	135
d2 M7	10	16	25	32	40	50	63	80	100
d3	10	16	25	32	40	50	63	80	100
d4	10	16	25	32	40	50	63	80	100
d5	44	64	86	103	126	141	181	252	302
d6	44	64	86	103	126	141	181	252	302
d7	44	64	86	103	126	141	181	252	302
m	10	16	25	32	40	50	63	80	100
m1	10	16	25	32	40	50	63	80	100
m2	10	16	25	32	40	50	63	80	100
m3	10	16	25	32	40	50	63	80	100
m4	10	16	25	32	40	50	63	80	100
m5	10	16	25	32	40	50	63	80	100
m6	10	16	25	32	40	50	63	80	100
m7	10	16	25	32	40	50	63	80	100
m8	10	16	25	32	40	50	63	80	100
m9	10	16	25	32	40	50	63	80	100
m10	10	16	25	32	40	50	63	80	100
m11	10	16	25	32	40	50	63	80	100
m12	10	16	25	32	40	50	63	80	100
m13	10	16	25	32	40	50	63	80	100
m14	10	16	25	32	40	50	63	80	100
m15	10	16	25	32	40	50	63	80	100
m16	10	16	25	32	40	50	63	80	100
m17	10	16	25	32	40	50	63	80	100
m18	10	16	25	32	40	50	63	80	100
m19	10	16	25	32	40	50	63	80	100
m20	10	16	25	32	40	50	63	80	100
m21	10	16	25	32	40	50	63	80	100
m22	10	16	25	32	40	50	63	80	100
m23	10	16	25	32	40	50	63	80	100
m24	10	16	25	32	40	50	63	80	100
m25	10	16	25	32	40	50	63	80	100
m26	10	16	25	32	40	50	63	80	100
m27	10	16	25	32	40	50	63	80	100
m28	10	16	25	32	40	50	63	80	100
m29	10	16	25	32	40	50	63	80	100
m30	10	16	25	32	40	50	63	80	100
m31	10	16	25	32	40	50	63	80	100
m32	10	16	25	32	40	50	63	80	100
m33	10	16	25	32	40	50	63	80	100
m34	10	16	25	32	40	50	63	80	100
m35	10	16	25	32	40	50	63	80	100
m36	10	16	25	32	40	50	63	80	100
m37	10	16	25	32	40	50	63	80	100
m38	10	16	25	32	40	50	63	80	100
m39	10	16	25	32	40	50	63	80	100
m40	10	16	25	32	40	50	63	80	100
m41	10	16	25	32	40	50	63	80	100
m42	10	16	25	32	40	50	63	80	100
m43	10	16	25	32	40	50	63	80	100
m44	10	16	25	32	40	50	63	80	100
m45	10	16	25	32	40	50	63	80	100
m46	10	16	25	32	40	50	63	80	100
m47	10	16	25	32	40	50	63	80	100
m48	10	16	25	32	40	50	63	80	100
m49	10	16	25	32	40	50	63	80	100
m50	10	16	25	32	40	50	63	80	100
m51	10	16	25	32	40	50	63	80	100
m52	10	16	25	32	40	50	63	80	100
m53	10	16	25	32	40	50	63	80	100
m54	10	16	25	32	40	50	63	80	100
m55	10	16	25	32	40	50	63	80	100
m56	10	16	25	32	40	50	63	80	100
m57	10	16	25	32	40	50	63	80	100
m58	10	16	25	32	40	50	63	80	100
m59	10	16	25	32	40	50	63	80	100
m60	10	16	25	32	40	50	63	80	100
m61	10	16	25	32	40	50	63	80	100
m62	10	16	25	32	40	50	63	80	100
m63	10	16	25	32	40	50	63	80	100
m64	10	16	25	32	40	50	63	80	100
m65	10	16	25	32	40	50	63	80	100
m66	10	16	25	32	40	50	63	80	100
m67	10	16	25	32	40	50	63	80	100
m68	10	16	25	32	40	50	63	80	100
m69	10	16	25	32	40	50	63	80	100
m70	10	16	25	32	40	50	63	80	100
m71	10	16	25	32	40	50	63	80	100
m72	10	16	25	32	40	50	63	80	100
m73	10	16	25	32	40	50	63	80	100
m74	10	16	25	32	40	50	63	80	100
m75	10	16	25	32	40	50	63	80	100
m76	10	16	25	32	40	50	63	80	100
m77	10	16	25	32	40	50	63	80	100
m78	10	16	25	32	40	50	63	80	100
m79	10	16	25	32	40	50	63	80	100
m80	10	16	25	32	40	50	63	80	100
m81	10	16	25	32	40	50	63	80	100
m82	10	16	25	32	40	50	63	80	100
m83	10	16	25	32	40	50	63	80	100
m84	10	16	25	32	40	50	63	80	100
m85	10	16	25	32	40	50	63	80	100
m86	10	16	25	32	40	50	63	80	100
m87	10	16	25	32	40	50	63	80	100
m88	10	16	25	32	40	50	63	80	100
m89	10	16	25	32	40	50	63	80	100
m90	10	16	25	32	40	50	63	80	100
m91	10	16	25	32	40	50	63	80	100
m92	10	16	25	32	40	50	63	80	100
m93	10	16	25	32	40	50	63	80	100
m94	10	16	25	32	40	50	63	80	100
m95	10	16	25	32	40	50	63	80	100
m96	10	16	25	32	40	50	63	80	100
m97	10	16	25	32	40	50	63	80	100
m98	10	16	25	32	40	50	63	80	100
m99	10	16	25	32	40	50	63	80	100
m100	10	16	25	32	40	50	63	80	100